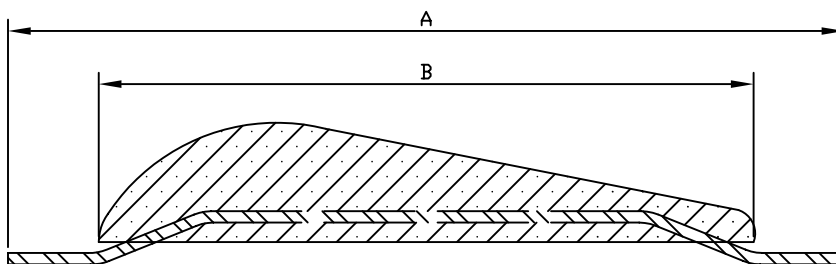
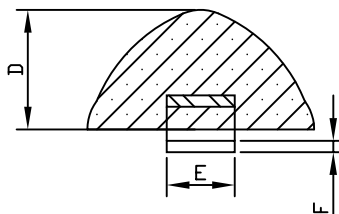


CROSS SECTION B-B'



CROSS SECTION A-A'



TYPE	DIMENSIONS (mm)						WEIGHT (Kgr)		Code No
	A	B	C	D	E	F	Net	Gross	
A15	310	230	78	37	30	5	1.1	1.5	520000
A28	410	290	100	50	30	5	2.3	2.8	520005

NOTES: 1.Insert quality: Plate,bar sections: EN10025 grade S235 or S275
 2.Insert Welding: All fabrication of steel insert are according EN10287 and EN10288



ENVIRONMENTAL PROTECTION ENGINEERING S.A.

No	REVISION	DATE	DESIGNED	I.P	DRAWING NAME:	
			STUDIED	P.S		ALUMINIUM ANODES
			APPROVED	A.Y		
			REPLACE		ANODES NAME: FLUSH MOUNTED (HULL)	
			REPLACED BY			
			BELONGS		SCALE	
			APPLICATION			
			DRAWING No:		*:*	
			ALFM04			
			PAGE	1:1	DATE	06/09/01